



Welcome



**Everyone is valued
Everyone is motivated
Everyone achieves**

Our Core Christian values:
Co-operation • Compassion
Respect • Equality
Forgiveness • Peace





Welcome

St. Margaret's is a successful and well-respected school offering a rich learning experience in a safe, nurturing environment.



I am delighted that you have expressed an interest in our school. This booklet provides an introduction to St. Margaret's and our philosophy. Hopefully it will answer some of the questions that you might ask.

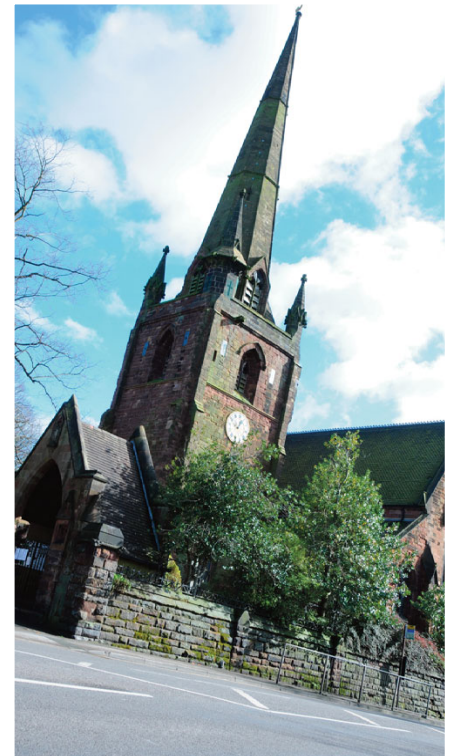
Should you wish to visit the school to see how we put our vision into practice, please contact the office to arrange an appointment. You will be very welcome.

We are committed to providing an excellent all round education for our children. The school motto sums up our positive approach and informs our ethos.

Everyone is valued Everyone is motivated Everyone achieves

The children mean a lot to us and we value their individual interests and talents. We encourage them to develop a wide range of skills and achieve challenging goals, celebrating their achievements with pride.

Our school is at the heart of the local community. We aim to build strong, inclusive relationships between children, parents, staff, governors and friends. You are welcome to attend a range of events and your involvement is always valued.



David Hugill

Mr. D. Hugill
Headteacher

“St Margaret's provides a happy learning environment where our children are encouraged to achieve their very best.”

Parent



“Children are involved in making decisions, including charitable work, clubs and choosing new play equipment.”
SCHOOL COUNCIL





Ethos & Vision

We aim to inspire a strong sense of faith and a commitment to uphold our core Christian Values and British Values.

We work closely with St. Margaret's Church in a mutually beneficial partnership. This includes engaging in acts of worship, both in school and church, to develop our pupils' spirituality. Children regularly lead worship and write prayers, developing a deeper understanding of faith and values. In addition, we work on a range of joint projects to create a common purpose as one community.

Children at St Margaret's embrace our caring ethos, working together to achieve success. We actively promote the importance of equality, respect and tolerance, celebrating the unique qualities of all individuals, both in our school community and wider society. Our compassion is exemplified by a clear commitment to a range of charitable work.

We work hard to inspire a love of learning so our pupils' can achieve their full potential.

Nurturing children and helping them to achieve their potential should be one and the same. We set challenging goals and expect our pupils to succeed across a wide ranging curriculum. Progress is carefully monitored - we ensure the pupils know what they are doing well and where they can improve whilst providing help and encouragement along the way. All successes are celebrated, whether achieved inside or outside school.

Children are encouraged to take the initiative and make a difference to enhance the life of school and the community. This includes self-driven homework projects, charity work, creating worships and a variety of student representative roles. Our active pupil groups (Faith Team or School Council) discuss a wide range of issues, making a series of informed choices which help to improve the school.



Everyone is
valued



Everyone is
motivated



Everyone
achieves



“Play time is fun, there are lots of toys and imagination games to play.”

Lily-Mae & Bethany



Curriculum

In our school learning is exciting, challenging and good fun. Children are encouraged to think for themselves and to develop excellent reasoning skills.

We offer a stimulating and rigorous curriculum which provides the children with lots of opportunities to apply their skills and talents in a range of contexts. Our pupils reach high standards in English and mathematics and also excel in a wide variety of areas, both within the curriculum and beyond.

A happy and challenging learning environment, in which children can enjoy themselves and are motivated to achieve their best, is central to our ethos. We aim to provide the best resources we can as well as nurturing and encouraging the children so that they can reach their goals.

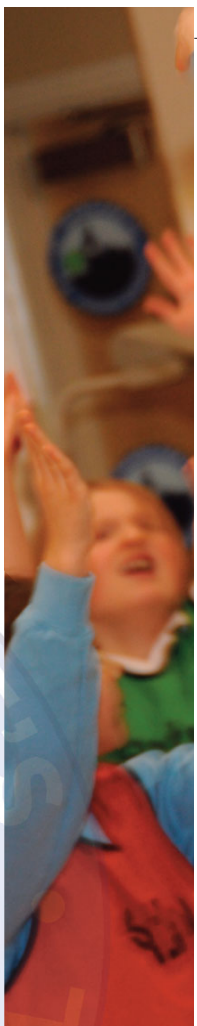
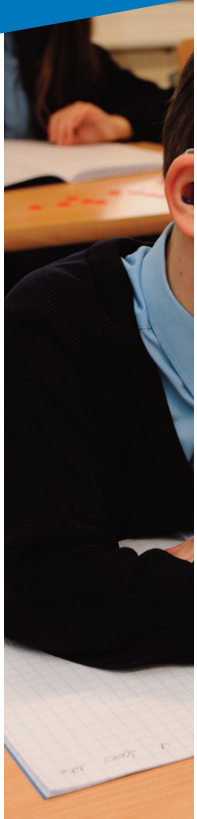
Our curriculum is reinforced with educational visits and visitors. We believe that these enriching activities put children's learning into

context and make it more meaningful. In addition to a whole school theatre visit every year, music plays a significant part in the life of the school; an active choir enjoys performing at public events and children have the opportunity to learn to play musical instruments.

We utilise our attractive and extensive grounds to develop pupil awareness of the environment, as well as offering a range of outdoor activities such as "Learning in the Woods". Children enjoy high quality P.E. lessons and we offer a wide range of extra curricula clubs, both sporting and otherwise. Pupils also participate in a variety of inter school sports competitions.

“Learning is a real challenge as well as great fun; teachers encourage you to improve, succeed and achieve your best.”

Georgia & Isabella



“ St Margaret’s is a bright and happy place to learn.”
Elizabeth





School Uniform

Our uniform helps to provide the children with a sense of identity and to take pride in their school community.

Uniform (available online - please see insert)

Pale blue shirt / blouse, worn with a school tie

Grey school trousers or school shorts (boys)

Mid length grey skirt, grey pinafore (girls)
[grey trousers may be worn in winter]

Navy school jumper with official badge (boys)

Navy school jumper / cardigan with official badge (girls)

Grey or black socks or tights

Shoes: black school shoes (comfortable but not trainers or boots)

Pale pink/white check dress may be worn by girls in the summer
[reversed blue blouse without tie is another option]

Please ensure that all items of clothing are clearly named

Jewellery should not be worn in school
(see Q&A section)



P.E. / Games kit

Navy shorts

Navy shorts or games skirt (girls)

White t-shirt

White trainers and socks

Navy leggings for gymnastics (girls)

Pale blue sweatshirt with school badge for outdoor games (available online)



Pale blue shirt / blouse,
worn with a school tie

Navy jumper /
cardigan with school
badge (girls)

Mid length grey skirt or
grey pinafore (girls)

black school shoes
(comfortable but not trainers)

Navy jumper with
school badge (boys)

Grey school trousers or
school shorts (boys)



Questions & Answers

Q - What should I do if my child is ill / absent from school?

A - Please contact school as soon as possible on the first morning to provide details.

Q - Can we take holidays in term time?

A - No. Government guidelines are clear that any holidays in term time must be for rare exceptions.

Q - Does school offer pre/after school care?

A - Yes. Care Club at St. Margaret's (Mrs Sarah Hancock) operates from 7.30am to 8.55am and 3.30pm to 6.00pm, during term time only.

Q - Can the children wear jewellery in school?

A - No, except for simple watches. Wearing jewellery in school can lead to nasty injuries. If you wish your child to have their ears pierced, please take them at the start of the summer holidays so they can be removed by the new term in September.

Q - How do we pay for school lunches and trips?

A - We use the ParentPay system for accepting payments. For further details please see separate sheet.

Q - Can I call in to see my child's teacher to clarify information / discuss issues?

A - Yes. We encourage parents to come into school. Please telephone / ask at Reception to arrange a mutually convenient time with the member of staff.

Q - What should I do if I change my address or contact details?

A - Please update the school office as soon as possible so that we can contact you if the need arises.

Q - Can school staff administer medicines, including inhalers?

A - Only when prescribed by a Doctor. Please complete the relevant form with the office.

Q - What time should my child arrive in the morning?

A - They can be dropped off at the gates from 8.45am. Please ensure they are punctual in the morning and arrive by 8.55am for the start of school.

“We are proud to be part of the St. Margaret's family.”

Ashton

“ St. Margaret’s is a caring school. My daughter really feels she belongs here. ”

Parent



Our Core Christian values:
Co-operation • Compassion
Respect • Equality
Forgiveness • Peace



St. Margaret's C.E. Junior School,
Wolstanton, Newcastle-under-Lyme,
Staffs. ST5 0HU
Tel: 01782 973875
email: office@st-margarets.staffs.sch.uk